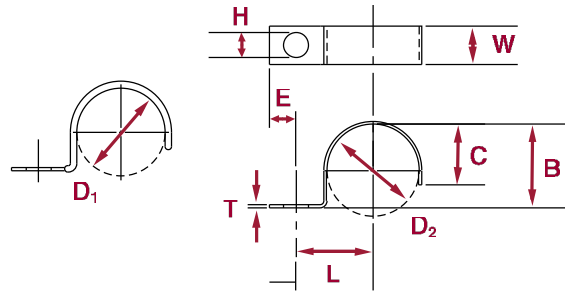
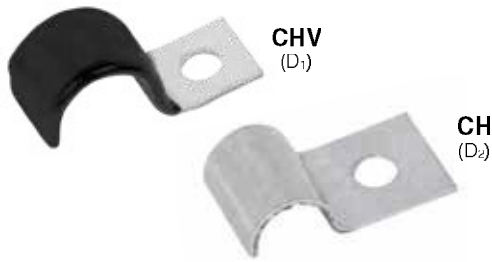


HALF CLIPS

MATERIAL: HD Galv Steel, Per ASTM A653/A653M or CRS, Per ASTM A 1008 CS Type B
CUSHION: Black Vinyl, 1/32" Thick

FINISH: Z1 - HD Galv Steel, Chem Treated G90
 Z2 - .0002 min Zinc, Clear



D ₁		D ₂		L	W	H	E	B	C	T
Clamping Diameter	Part Number	Clamping Diameter	Part Number	Center To Center	Width	Hole Diameter	Hole Center To End	Base To Top Of Diameter	Closure	Material Thickness
±.03"		±.015		±.031	±.010	±.005	±.015	±.015	±.015	±.002
		.125	CH-0204*	.203	.375	.125	.093	.125	.125	.025
			CH-0207	.437	.500	.218	.250	.125	.093	.032
			CH-0209	.437	.500	.281	.250	.125	.093	.032
		.187	CH-0307	.437	.500	.218	.250	.156	.093	.032
			CH-0309	.437	.500	.281	.250	.156	.093	.032
.187	CHV-0407	.250	CH-0407	.437	.500	.218	.250	.188	.156	.032
	CHV-0409		CH-0409	.437	.500	.281	.250	.188	.156	.032
.250	CHV-0507	.312	CH-0507	.500	.500	.218	.250	.250	.188	.048
	CHV-0509		CH-0509	.500	.500	.281	.250	.250	.188	.048
	CHV-0511		CH-0511	.500	.625	.343	.250	.250	.188	.048
.312	CHV-0607	.375	CH-0607	.531	.625	.218	.312	.312	.218	.048
	CHV-0609		CH-0609	.531	.625	.281	.312	.312	.218	.060
	CHV-0611		CH-0611	.687	.625	.343	.343	.375	.218	.060
	CHV-0613		CH-0613	.687	.750	.406	.343	.375	.218	.048
.375	CHV-0707	.437	CH-0707	.562	.625	.218	.312	.375	.281	.048
	CHV-0709		CH-0709	.562	.625	.281	.312	.375	.281	.060
	CHV-0711		CH-0711	.687	.625	.343	.375	.375	.281	.060
	CHV-0713		CH-0713	.687	.750	.406	.375	.375	.281	.060
.437	CHV-0807	.500	CH-0807	.625	.625	.218	.312	.437	.312	.060
	CHV-0809		CH-0809	.625	.625	.281	.312	.437	.312	.060
	CHV-0811		CH-0811	.687	.625	.343	.375	.437	.312	.060
	CHV-0813		CH-0813	.687	.750	.406	.375	.437	.312	.060
.500	CHV-0907	.562	CH-0907	.687	.625	.218	.312	.500	.343	.060
	CHV-0909		CH-0909	.687	.625	.281	.312	.500	.343	.060
	CHV-0911		CH-0911	.750	.625	.343	.375	.500	.343	.060
	CHV-0913		CH-0913	.750	.750	.406	.375	.500	.343	.060
.562	CHV-1007	.625	CH-1007	.750	.625	.218	.312	.562	.437	.060
	CHV-1009		CH-1009	.750	.625	.281	.312	.562	.437	.060
	CHV-1011		CH-1011	.812	.625	.343	.375	.562	.437	.060
	CHV-1013		CH-1013	.812	.750	.406	.375	.562	.437	.060

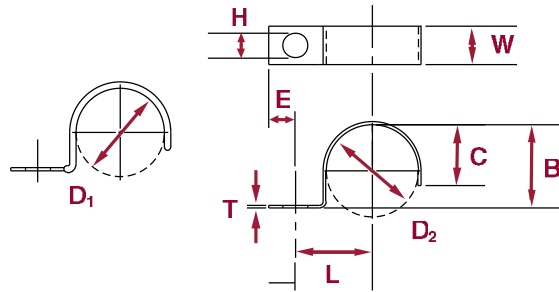
Except for clamping diameter, dimensions of cushioned and plain parts are identical.
 Note: Part Numbers shown with asterisk (*) are only available in Z2.

All Parts In This Catalog Are RoHS & REACH Compliant.

HALF CLIPS

MATERIAL: HD Galv Steel, Per ASTM A653/A653M or CRS, Per ASTM A 1008 CS Type B
CUSHION: Black Vinyl, 1/32" Thick

FINISH: Z1 - HD Galv Steel, Chem Treated G90
 Z2 - .0002 min Zinc, Clear



D ₁		D ₂		L	W	H	E	B	C	T
Clamping Diameter	Part Number	Clamping Diameter	Part Number	Center To Center	Width	Hole Diameter	Hole Center To End	Base To Top Of Diameter	Closure	Material Thickness
±.031		±.015		±.031	±.010	±.005	±.015	±.015	±.015	±.002
.625	CHV-1107	.687	CH-1107	.812	.625	.218	.312	.625	.406	.060
	CHV-1109		CH-1109	.812	.625	.281	.312	.625	.406	.060
	CHV-1111		CH-1111	.875	.625	.343	.375	.625	.406	.060
	CHV-1113		CH-1113	.875	.750	.406	.375	.625	.406	.060
.687	CHV-1207	.750	CH-1207	.812	.625	.218	.312	.687	.437	.060
	CHV-1209		CH-1209	.812	.625	.281	.312	.687	.437	.060
	CHV-1211		CH-1211	.875	.625	.343	.375	.687	.437	.060
	CHV-1213		CH-1213	.875	.750	.406	.375	.687	.437	.060
.750	CHV-1307	.812	CH-1307	.875	.625	.218	.312	.750	.468	.060
	CHV-1309		CH-1309	.875	.625	.281	.312	.750	.468	.060
	CHV-1311		CH-1311	.937	.625	.343	.375	.750	.468	.060
	CHV-1313		CH-1313	.937	.750	.406	.375	.750	.468	.060
.812	CHV-1409	.875	CH-1409	.937	.750	.281	.375	.812	.531	.060
	CHV-1411		CH-1411	.937	.750	.343	.375	.812	.531	.060
	CHV-1413		CH-1413	.937	.750	.406	.375	.812	.531	.060
.875	CHV-1509	.937	CH-1509	.968	.750	.281	.437	.812	.593	.060
	CHV-1511		CH-1511	.968	.750	.343	.437	.812	.593	.060
	CHV-1513		CH-1513	.968	.750	.406	.437	.812	.593	.060
.937	CHV-1609	1.000	CH-1609	1.000	.750	.281	.437	.937	.625	.060
	CHV-1611		CH-1611	1.000	.750	.343	.437	.937	.625	.060
	CHV-1613		CH-1613	1.000	.750	.406	.437	.937	.625	.060
1.000	CHV-1709	1.062	CH-1709	1.062	.750	.281	.437	1.000	.687	.060
	CHV-1711		CH-1711	1.062	.750	.343	.437	1.000	.687	.060
	CHV-1713		CH-1713	1.062	.750	.406	.437	1.000	.687	.060

Except for clamping diameter, dimensions of cushioned and plain parts are identical.
 Note: Part Numbers shown with asterisk (*) are only available in Z2.