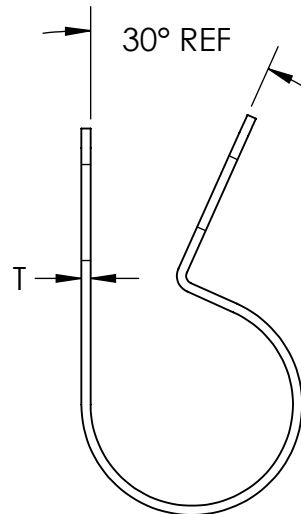
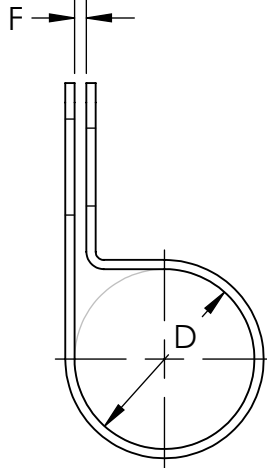


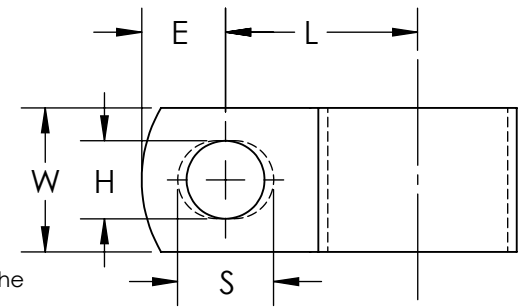
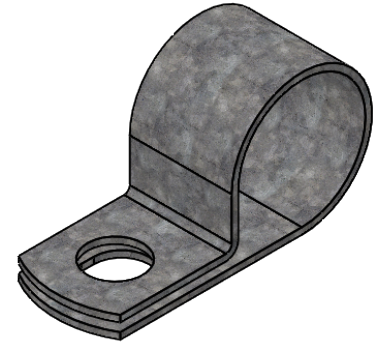
bb	Width (W)
09	.500
11	.625
13	.750
15	.875
17	1.000
± .010	

Exceptions to the rule for W include:
CO-0415, CO-0515, and CO-0615 = .750
CO-0517, CO-0617, and 0717 = .875

Clamping Diameter (D)	Center to Center (L)	
	aa from 02 to 32	aa from 33 to 65
$\frac{aa}{16}$	$\frac{aa + bb + 3}{32}$	$\frac{aa + bb + 4}{32}$
± .015	± .031	



As Supplied (Open Position)



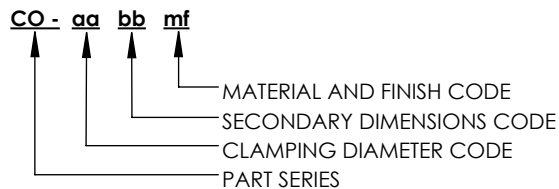
Note: CO clamps have a circular hole with diameter H on the top side and a slotted hole with H width, and length S, on the bottom side.

Material and Finish Codes

- Z1 - CS, HD Galvanized, Chem Treated G90
- Z2 - CS, .0002 min Zinc, Clear
- AL - 5052 H34 per ASTM B209
- SS - Stainless Steel, Per ASTM A240/A666

bb	Hole Diameter (H)	Hole Center to End (E)	Slot Length (S)	Gap (F)		Material Thickness (T)	
				aa from 02 to 06	aa from 07 to 65	aa from 02 to 07	aa from 08 to 65
09	.281	.312	.375	.031	.062	.031	.048
11	.343	.375	.437				
13	.406	.437	.500				
15	.468	.500	.562	N/A	N/A	N/A	N/A
17	.531	.562	.625				
± .005				± .031			

EXPLANATION OF PART CALLOUT



EXAMPLE OF PART CALLOUT

CO- 16 13 Z1

This part number indicates the clamp will have dimensions:
Clamping Diameter (D) = 1.000
Hole Diameter (H) = .406
Center to Center (L) = 1.375
Width (W) = .750
Hole Center to End (E) = .437
Gap (F) = .062
Material Thickness (G) = .048
Slot Length (S) = .500

Made from CS, Hot Dipped Galvanized, Chem Treated G90



THE ORIGINAL CLIP & CLAMP CO.
1221 SOUTH PARK STREET
PORT WASHINGTON, WI 53074
(262) 377-5030

PROPRIETARY AND CONFIDENTIAL
THE INFORMATION CONTAINED IN THIS DRAWING IS THE SOLE PROPERTY OF KICKHAEFER MANUFACTURING COMPANY. ANY REPRODUCTION IN PART OR AS A WHOLE WITHOUT THE WRITTEN PERMISSION OF KICKHAEFER MANUFACTURING COMPANY IS PROHIBITED.

PART SERIES MASTER PRINT

CO

WIRING AND TUBE CLAMPS

DRAWN	CHECKED
BC	KW
8/22/17	11/20/18

NOT TO SCALE