

5

4

3

2

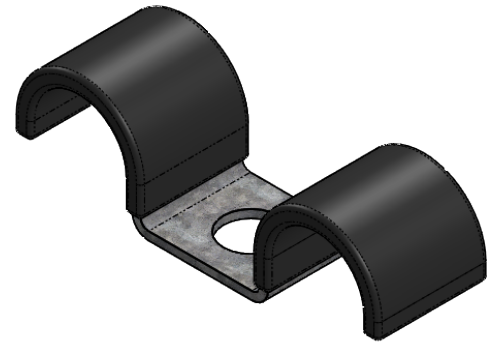
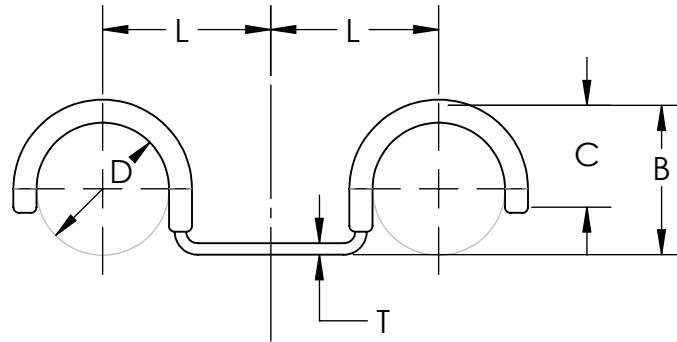
1

**Material and Finish Codes**

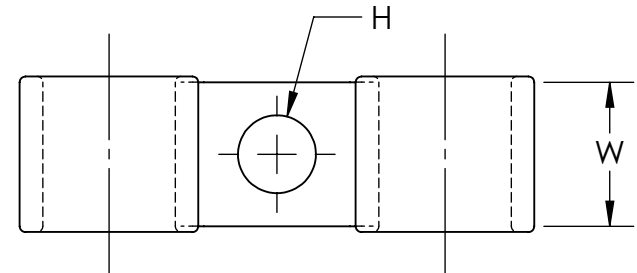
Z1 - CS, HD Galvanized, Chem Treated G90

Z2 - CS, .0002 min Zinc, Clear

Cushion is Black Vinyl, 1/32" Thick



Part Number	Clamping Diameter (D)	Center to Center (L)	Width (W)	Hole Diameter (H)	Base to Top of Radius (B)	Closure (C)	Material Thickness (T)
CMV-0609	.312	.625	.187	.281	.343	.281	.187
CMV-0611				.343			
CMV-0709	.375	.687	.750	.281	.375	.343	
CMV-0711				.343			
CMV-0809	.437	.812		.281	.437	.250	
CMV-0811				.343			
CMV-0909	.500	.875		.281	.468	.400	
CMV-0911				.343			
CMV-1009	.562	.625		.281	.625	.500	
CMV-1011				.343			
CMV-1109	.625		1.000	.281		.437	
CMV-1311*	.750	1.250	1.000	.343	.718	.406	
CMV-1313*				.406			
CMV-1409*	.812	.906	.750	.281	.843	.687	
CMV-1413*				.406			
CMV-1609*	.937	1.062		.281	.906	.750	
CMV-1713*	1.000	1.156		1.000	.406	.968	.968
	± .015	± .031	± .010	± .005	± .015	REF.	± .002


**KMC**  
 THE ORIGINAL CLIP & CLAMP CO.

 1221 SOUTH PARK STREET  
 PORT WASHINGTON, WI 53074  
 (262) 377-5030
**PROPRIETARY AND CONFIDENTIAL**
 THE INFORMATION CONTAINED IN THIS  
 DRAWING IS THE SOLE PROPERTY OF  
 KICKHAEFER MANUFACTURING COMPANY. ANY  
 REPRODUCTION IN PART OR AS A WHOLE  
 WITHOUT THE WRITTEN PERMISSION OF  
 KICKHAEFER MANUFACTURING COMPANY IS  
 PROHIBITED.
**PART SERIES  
MASTER PRINT****CMV**
 COATED DOUBLE  
 PIPE CLAMPS

DRAWN

CHECKED

BC

KW

8/22/17

9/11/18

NOT TO SCALE

\*Part only available in Z2

\*\*Material Thickness tolerance of ± .004

5

4

3

2

1