

5

4

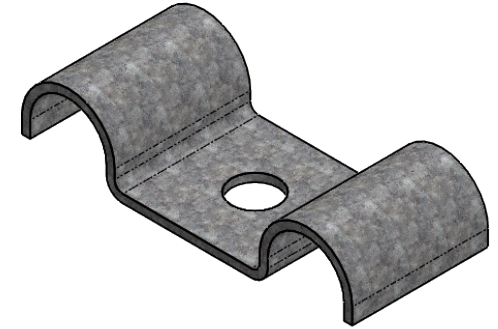
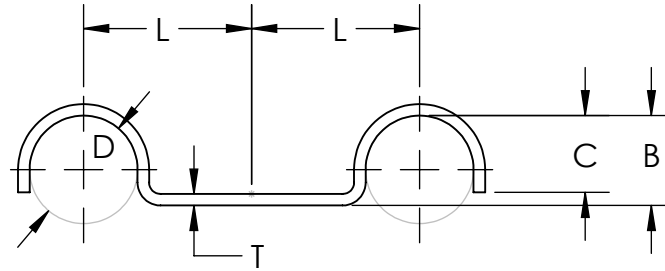
3

2

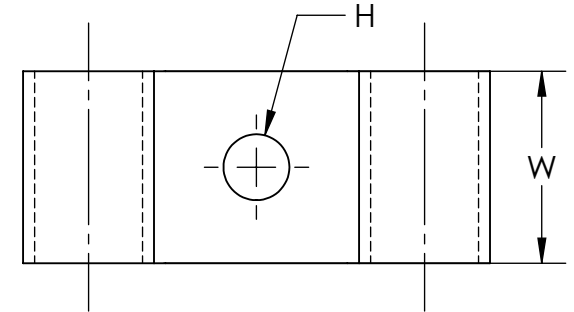
1


Material and Finish Codes

Z1 - CS, HD Galvanized, Chem Treated G90
 Z2 - CS, .0002 min Zinc, Clear



Part Number	Clamping Diameter (D)	Center to Center (L)	Width (W)	Hole Diameter (H)	Base to Top of Radius (B)	Closure (C)	Material Thickness (T)				
CM-0307	.187	.437	.500	.218	.156	.093	.048				
CM-0309				.281							
CM-0407	.250	.531	.625	.218	.093	.060					
CM-0409				.281							
CM-0507	.312	.625	.750	.218	.296			.090**			
CM-0509				.281							
CM-0609	.375	.687	1.000	.281	.343				.120		
CM-0611				.343							
CM-0709	.437	.812	.750	.281	.375					REF.	
CM-0711				.343							
CM-0809	.500	.875	.750	.281	.437						± .002
CM-0811				.343							
CM-0909	.562	.906	.750	.281	.468		± .002				
CM-0911				.343							
CM-1009	.625	1.062	1.000	.281	.625	± .002					
CM-1011				.343							
CM-1109	.687	1.156	1.000	.281	.718			± .002			
CM-1311*				.406							
CM-1313*	.812	.906	.750	.406	.718				± .002		
CM-1409*				.281							
CM-1413*	.875	1.062	.750	.406	.687					± .002	
CM-1609*				.281							
CM-1713*	1.000	1.156	1.000	.406	.968						± .002
	± .015	± .031	± .010	± .005	± .015						REF.



 THE ORIGINAL CLIP & CLAMP CO. 1221 SOUTH PARK STREET PORT WASHINGTON, WI 53074 (262) 377-5030	PART SERIES MASTER PRINT	
	CM DOUBLE PIPE CLAMPS	
PROPRIETARY AND CONFIDENTIAL THE INFORMATION CONTAINED IN THIS DRAWING IS THE SOLE PROPERTY OF KICKHAEFER MANUFACTURING COMPANY. ANY REPRODUCTION IN PART OR AS A WHOLE WITHOUT THE WRITTEN PERMISSION OF KICKHAEFER MANUFACTURING COMPANY IS PROHIBITED.	DRAWN	CHECKED
	BC	KW
	8/22/17	9/11/18
NOT TO SCALE		

*Parts only available in Z2

**Material Thickness tolerance of ± .004

5

4

3

2

1

A

A