

D

D

C

C

B

B

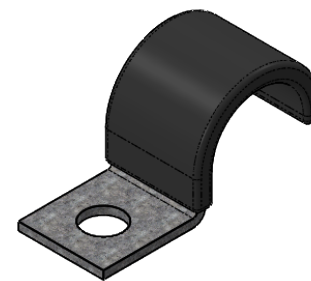
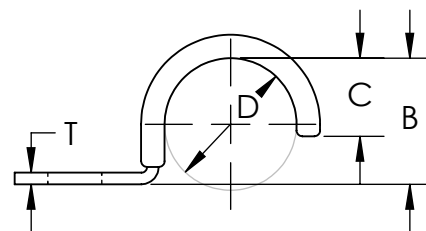
A

A

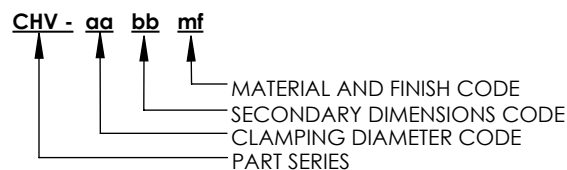
aa	Closure (C)	Center to Center (L)	
		bb 07 and 09	bb 11 and 13
04	.156	.093	N/A
05	.188	.500	.500
06	.218	.531	.687
07	.281	.562	
08	.312	.625	
09	.343	.687	.750
10	.437	.750	.812
11	.406	.812	.875
12	.437		
13	.468	.875	.937
14	.531	.937	
15	.593	.968	.968
16	.625	1.000	1.000
17	.687	1.062	1.062
± .015		± .031	

Clamping Diameter (D)	Base to Top of Diameter (B)
$\frac{aa - 1}{16}$	$\frac{aa - 1}{16}$
± .015	± .015

bb	Hole Diameter (H)	Hole Center to End (E)				Material Thickness (T)				Width (W)															
		aa from 02 to 05	aa from 06 to 13	aa equal to 14	aa from 15 to 17	aa from 02 to 04	aa equal to 05	aa equal to 05	aa from 08 to 17	aa from 02 to 05	aa from 06 to 13	aa from 14 to 17													
07	.218	.250	.312	.375	.437	.032	.048	.048	.060	.500	.625	N/A													
09	.281		.375			.437		.032		.048		.060	.048	.060	.500	.625	.750								
11	.343						.375											.437	.032	.048	.060	.048	.060	.500	.625
13	.406										.375														
	± .005	± .015								± .010															



EXPLANATION OF PART CALLOUT

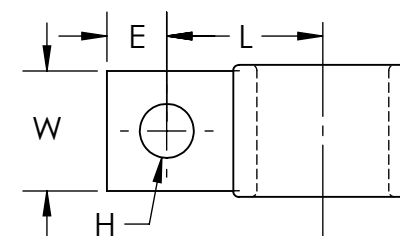


EXAMPLE OF PART CALLOUT

CHV - 10 09 Z1

This part number indicates the clamp will have dimensions:
 Clamping Diameter (D) = .563
 Hole Diameter (H) = .281
 Center to Center (L) = .750
 Width (W) = .625
 Hole Center To End (E) = .312
 Material Thickness (G) = .060
 Base To Top Of Diameter (B) = .562
 Closure (C) = .437

Made from CS, Hot Dipped Galvanized,
 Chem Treated G90



Material and Finish Codes

Z1 - CS, HD Galvanized, Chem Treated G90
 Z2 - CS, .0002 min. Zinc w/Clear Chromate

Cushion is Black Vinyl, 1/32" Thick

KMC
 THE ORIGINAL CLIP & CLAMP CO.

1221 SOUTH PARK STREET
 PORT WASHINGTON, WI 53074
 (262) 377-5030

PROPRIETARY AND CONFIDENTIAL

THE INFORMATION CONTAINED IN THIS
 DRAWING IS THE SOLE PROPERTY OF
 KICKHAEFER MANUFACTURING COMPANY. ANY
 REPRODUCTION IN PART OR AS A WHOLE
 WITHOUT THE WRITTEN PERMISSION OF
 KICKHAEFER MANUFACTURING COMPANY IS
 PROHIBITED.

PART SERIES
 MASTER PRINT

CHV

COATED HALF CLIPS

DRAWN

CHECKED

BC

KW

8/22/17

9/11/18

NOT TO SCALE