

5

4

3

2

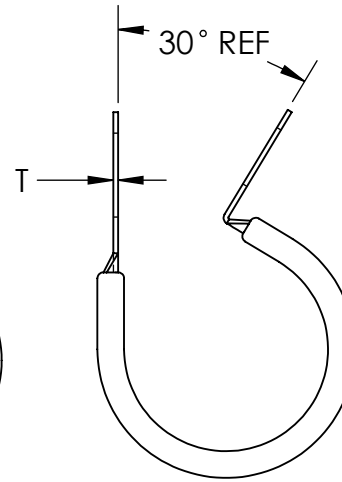
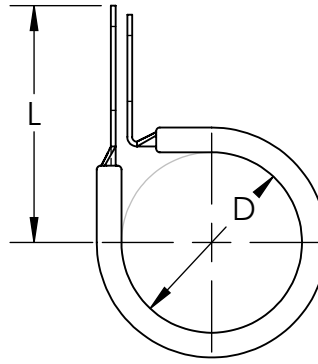
1

Material and Finish Codes

Z1 - CS, HD Galvanized, Chem Treated G90

Z2 - CS, .0002 min Zinc, Clear

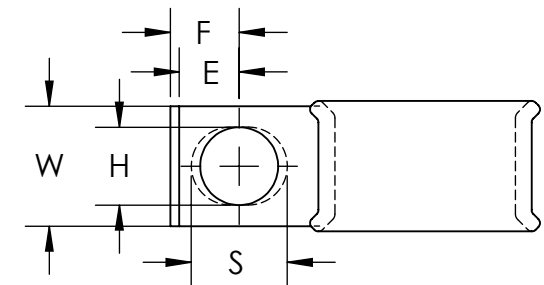
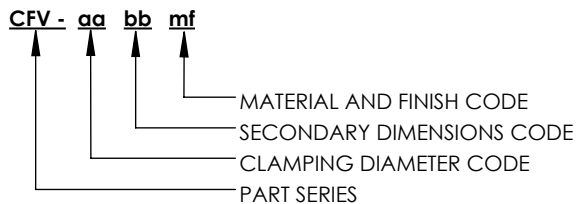
Cushion is Black Vinyl, 1/32" Thick

As Supplied
(Open Position)

Note: CFV clamps have a circular hole with diameter H on the top side and a slotted hole with H width, and length S, on the bottom side.

Clamping Diameter (D)	Center to Center (L)		
	bb = 09	bb = 11	bb = 13
$\frac{aa - 1}{16}$	$\frac{aa + 12}{16}$	$\frac{aa + 13}{16}$	$\frac{aa + 15}{32}$
± .015	± .031		

bb	Hole Diameter (H)	Hole Center to End (E)	Slot Length to End (F)	Slot Length (S)	Width (W)	Material Thickness (T)
09	.281	.250	.296	.375	.500	.025
11	.343	.281	.328	.437	.562	
13	.406	.312	.359	.500	.625	
	± .005	± .015	± .015	± .020	± .010	

**EXPLANATION OF PART CALLOUT****EXAMPLE OF PART CALLOUT****CFV - 12 13 Z1**

This part number indicates the clamp will have dimensions:
Clamping Diameter (D) = .750
Hole Diameter (H) = .406
Center to Center (L) = .843
Width (W) = .625
Hole Center to End (E) = .312
Slot Center to End (F) = .359
Slot Length (S) = .500

Made from Hot Dipped Galvanized Steel
Cushion is Black Vinyl, 1/32" Thick

KMC

THE ORIGINAL CLIP & CLAMP CO.

1221 SOUTH PARK STREET
PORT WASHINGTON, WI 53074
(262) 377-5030**PROPRIETARY AND CONFIDENTIAL**

THE INFORMATION CONTAINED IN THIS DRAWING IS THE SOLE PROPERTY OF KICKHAEFER MANUFACTURING COMPANY. ANY REPRODUCTION IN PART OR AS A WHOLE WITHOUT THE WRITTEN PERMISSION OF KICKHAEFER MANUFACTURING COMPANY IS PROHIBITED.

PART SERIES
MASTER PRINT**CFV**COATED, FLARED EDGE
CLAMPS

DRAWN

CHECKED

BC

KW

8/22/17

9/11/18

NOT TO SCALE

5

4

3

2

1

A

A