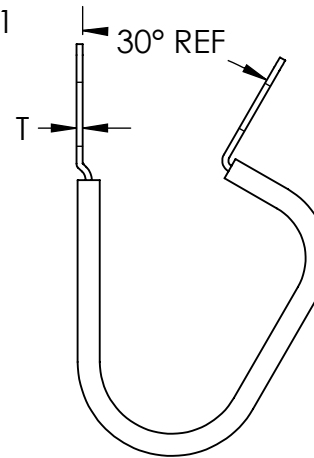
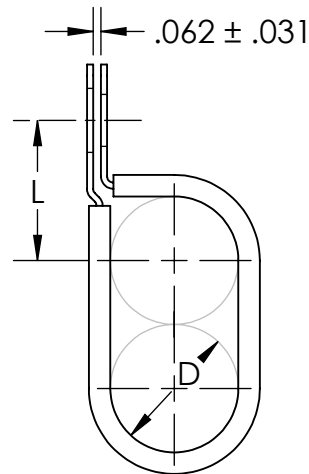


Material and Finish Codes

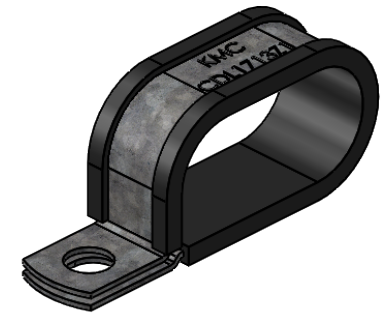
Z1 - CS, HD Galvanized, Chem Treated G90
SS - Stainless Steel, Per ASTM A240/A666

Cushion

EPDM per SAE J200/ASTM BC715A14C12E034
or
Silicone per AMS3304, SAE J200/ASTM D200 M2GE706



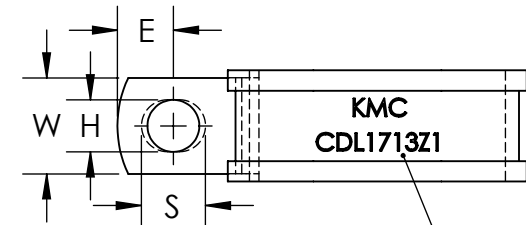
As Supplied
(Open Position)



Note: CDL clamps have a circular hole with diameter H on the top side and a slotted hole with H width, and length S, on the bottom side.

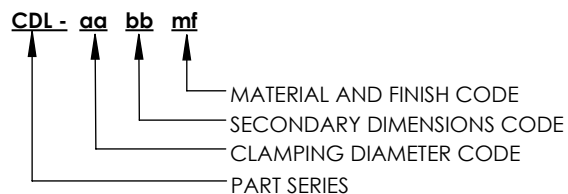
Clamping Diameter (D)	Center to Center (L)
$\frac{aa}{16}$	$\frac{aa + bb + 7}{32}$
± .015	± .031

bb	Hole Diameter (H)	Hole Center to End (E)	Width (W)	Slot Length (S)	HD Galv Thickness (T)			Stainless Thickness (T)	
					aa from 04 to 07	aa from 08 to 16	aa from 17 to 24	aa from 04 to 07	aa from 08 to 24
07	.203	.250	.500	.297	.032	.032	.048	.032	.048
09	.281	.312		.375					
11	.343	.375	.625	.437					
13	.406	.437	.750	.500					
15	.468	.500		.562					
17	.531	.562	1.000	.625					
	± .005	± .015	± .010	± .020	± .002			± .002	



KMC and Part Number
Stamped in Metal

EXPLANATION OF PART CALLOUT



EXAMPLE OF PART CALLOUT

CDL - 17 13 Z1

This part number indicates the clamp will have dimensions:
Clamping Diameter (D) = 1.062
Hole Diameter (H) = .406
Center to Center (L) = 1.125
Width (W) = .750
Hole Center to End (E) = .437
Material Thickness (G) = .048
Slot Length (S) = .500

Made from CS, Hot Dipped Galvanized,
Chem Treated G90



THE ORIGINAL CLIP & CLAMP CO.
1221 SOUTH PARK STREET
PORT WASHINGTON, WI 53074
(262) 377-5030

PROPRIETARY AND CONFIDENTIAL

THE INFORMATION CONTAINED IN THIS DRAWING IS THE SOLE PROPERTY OF KICKHAEFER MANUFACTURING COMPANY. ANY REPRODUCTION IN PART OR AS A WHOLE WITHOUT THE WRITTEN PERMISSION OF KICKHAEFER MANUFACTURING COMPANY IS PROHIBITED.

PART SERIES MASTER PRINT

CDL

DOUBLE TUBE CLAMPS,
WITH LINER

DRAWN CHECKED

BC KW

8/22/17 9/11/18

NOT TO SCALE