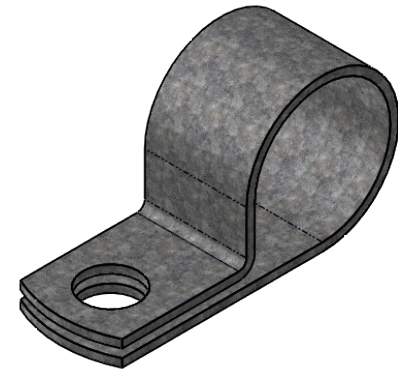
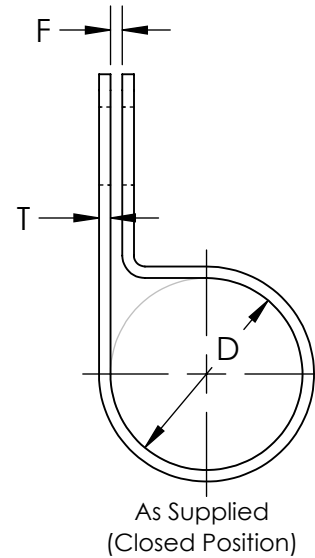
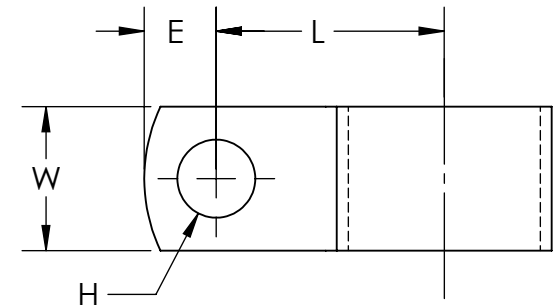


Material and Finish Codes

Z1 - CS, HD Galvanized, Chem Treated G90
Z2 - CS, .0002 min Zinc, Clear



Note: CC clamps have circular holes on the top and bottom sides with diameter H



Clamping Diameter (D)	Center to Center (L)
$\frac{aa}{16}$	See KMC Catalog
$\pm .015$	$\pm .031$

bb	Hole Diameter (H)	Hole Center to End (E)	Width (W)			Gap (F)			Material Thickness (T)		
			aa from 05 to 07	aa from 08 to 15	aa from 16 to 33	aa from 05 to 17	aa from 18 to 24	aa from 25 to 33	aa from 05 to 06	aa from 07 to 11	aa from 12 to 33
09	.281	.250	.625	.625	.625	.032	.062	.125	.032	.048	.060
11	.343	.312			.750						
13	.406	.375	.750	.750	.750						
15	.468	.437		.875	.875						
17	.531	.500	.875	1.000	1.000						
	± .005	± .015	± .010			± .031					

EXPLANATION OF PART CALLOUT

CC - aa bb mf
↑ ↑ ↑ ↑
MATERIAL AND FINISH CODE
SECONDARY DIMENSIONS CODE
CLAMPING DIAMETER CODE
PART SERIES

EXAMPLE OF PART CALLOUT

CC - 16 13 Z1

This part number indicates the clamp will have dimensions:
Clamping Diameter (D) = 1.000
Hole Diameter (H) = .406
Center to Center (L) = 1.187
Width (W) = .750
Hole Center to End (E) = .375
Gap (F) = .032
Material Thickness (G) = .060

Made from CS, Hot Dipped Galvanized,
Chem Treated G90

KMC
THE ORIGINAL CLIP & CLAMP CO.

1221 SOUTH PARK STREET
PORT WASHINGTON, WI 53074
(262) 377-5030

PROPRIETARY AND CONFIDENTIAL

THE INFORMATION CONTAINED IN THIS DRAWING IS THE SOLE PROPERTY OF KICKHAEFER MANUFACTURING COMPANY. ANY REPRODUCTION IN PART OR AS A WHOLE WITHOUT THE WRITTEN PERMISSION OF KICKHAEFER MANUFACTURING COMPANY IS PROHIBITED.

PART SERIES
MASTER PRINT

CC

TUBE CLAMPS

DRAWN

BC

8/22/17

CHECKED

KW

9/11/18

NOT TO SCALE