

5

4

3

2

1

Material and Finish Codes

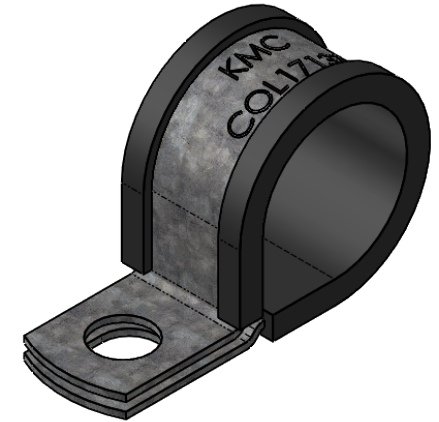
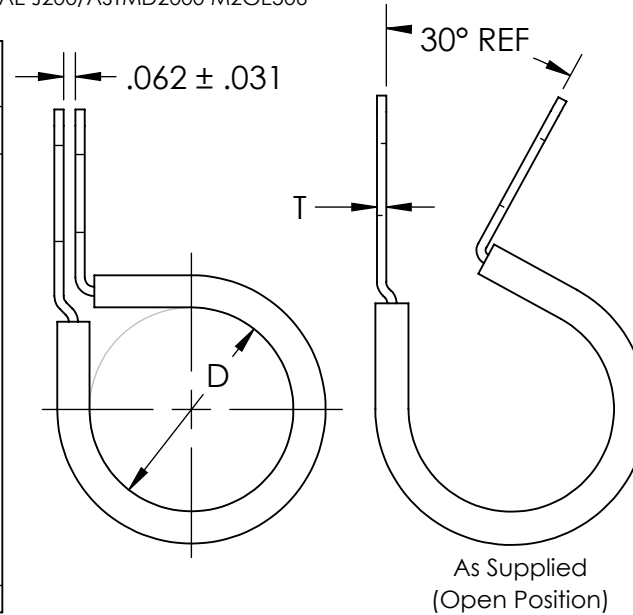
Z1 - CS, HD Galvanized, Chem Treated G90
 SS - Stainless Steel, Per ASTM A240/A666
 AL - 5052 H34 per ASTM B209

Cushion

Black EPDM per SAE J200/ASTM D2000 BC715A
 or
 Red Silicone per AMS3303 SAE J200/ASTMD2000 M2GE506

**Center to Center
(L)**

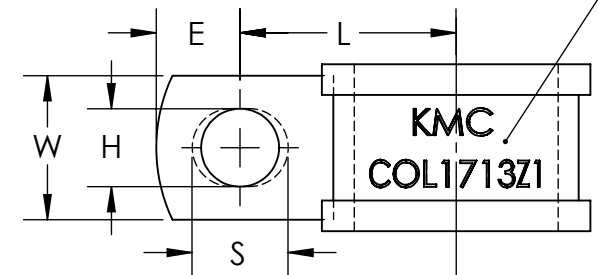
aa from 03 to 05		aa from 06 to 08	aa from 09 to 31	aa from 32 to 64
COL-0307	.916	$\frac{aa + bb + 3}{32}$	$\frac{aa + bb + 6}{32}$	$\frac{aa + bb + 7}{32}$
COL-0309	.854			
COL-0311	.791			
COL-0313	.729			
COL-0407	.711			
COL-0409	.674			
COL-0411	.611			
COL-0413	.656			
COL-0415	.718			
COL-0417	.781			
COL-0507	.569			
COL-0509	.562			
COL-0511	.625			
COL-0513	.687			
COL-0515	.750			
COL-0517	.812			
$\pm .031$				



Note: COL clamps have a circular hole with diameter H on the top side and a slotted hole with H width, and length S, on the bottom side.

KMC and Part Number Stamped in Metal

	Hole Diameter (H)	Hole Center to End (E)	Slot Length (S)	Width (W)	HD Galvanized Thickness (T)			Stainless Thickness (T)	
					aa from 03 to 06	aa from 07 to 64	aa from 17 to 64	aa from 03 to 16	aa from 17 to 64
07	.203	.250	.297	.500	.032	.032	N/A	.032	.048
09	.281	.312	.375			.048	.048		
11	.343	.375	.437	.750					
13	.406	.437	.500						
15	.468	.500	.562						
17	.531	.562	.625	1.000					
	± .005	± .015	± .020	± .010	± .002			± .002	

**EXPLANATION OF PART CALLOUT**

COL - aa bb mf

MATERIAL AND FINISH CODE
 SECONDARY DIMENSIONS CODE
 CLAMPING DIAMETER CODE
 PART SERIES

EXAMPLE OF PART CALLOUT

COL - 17 13 Z1

This part number indicates the clamp will have dimensions:

Clamping Diameter (D) = 1.062
 Center to Center (L) = 1.125
 Hole Center to End (E) = .437
 Slot Length (S) = .500

Hole Diameter (H) = .406
 Width (W) = .750
 Material Thickness (G) = .048

Made from CS, Hot Dipped Galvanized,
 Chem Treated G90

KMC
 THE ORIGINAL CLIP & CLAMP CO.

1221 SOUTH PARK STREET
 PORT WASHINGTON, WI 53074
 (262) 377-5030

PROPRIETARY AND CONFIDENTIAL

THE INFORMATION CONTAINED IN THIS DRAWING IS THE SOLE PROPERTY OF KICKHAERER MANUFACTURING COMPANY. ANY REPRODUCTION IN PART OR AS A WHOLE WITHOUT THE WRITTEN PERMISSION OF KICKHAERER MANUFACTURING COMPANY IS PROHIBITED.

**PART SERIES
MASTER PRINT****COL**

WIRING AND TUBE
 CLAMPS, WITH LINER

DRAWN CHECKED

BC KW

8/22/17 9/11/18

NOT TO SCALE

5

4

3

2

1