

5

4

3

2

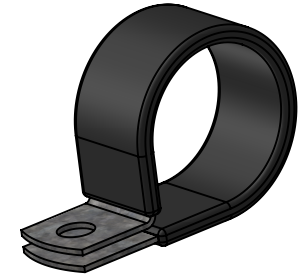
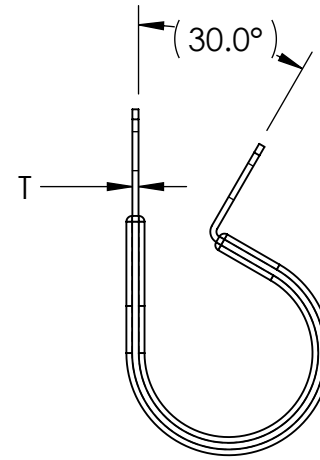
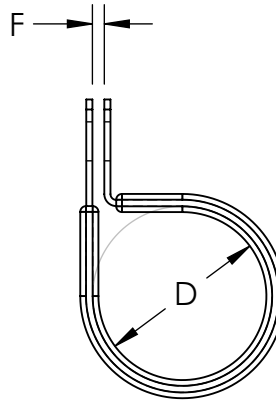
1

**Material and Finish Codes**

Z1 - CS, HD Galvanized, Chem Treated G90  
Z2 - CS, .0003 min Zinc, Clear

REVISIONS			
REV.	DESCRIPTION	DATE	APPROVED
1	Update Z2 Suffix to .0003 min.	11/17/2020	C. Goettl
2	Redrawn for Center to Center Dimension	6/23/2022	C. Goettl

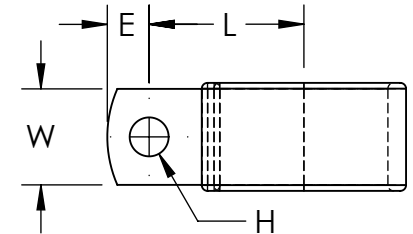
Clamping Diameter (D)	Center to Center (L)
$\frac{aa-1}{16}$	$\frac{aa}{32} + \frac{H}{2} + .235$
± .015	± .031



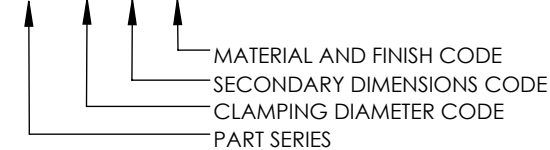
As Supplied  
(Open Position)

bb	Hole Diameter (H)	Hole Center to End (E)	Width (W)	Gap (F)	Material Thickness (T)
05	.172	.187	.375	.062	.032
07	.203	.218	.500		
	± .005	± .015	± .010	± .031	

Note: CWV clamps have circular holes on the top and bottom sides with diameter H

**EXPLANATION OF PART CALLOUT**

CWV - aa bb mf

**EXAMPLE OF PART CALLOUT**

CWV - 16 07 Z1

This part number indicates the clamp will have dimensions:  
Clamping Diameter (D) = 0.937  
Hole Diameter (H) = .203  
Center to Center (L) = 0.837  
Width (W) = .500  
Hole Center To End (E) = .218

Made from CS, Hot Dipped Galvanized,  
Chem Treated G90  
Coated in Black Vinyl, 1/32" Thick

**KMC**<sup>TM</sup>

THE ORIGINAL CLIP & CLAMP CO.  
1221 SOUTH PARK STREET  
PORT WASHINGTON, WI 53074  
(262) 377-5030

**PROPRIETARY AND CONFIDENTIAL**

THE INFORMATION CONTAINED IN THIS DRAWING IS THE SOLE PROPERTY OF KICKHAEFER MANUFACTURING COMPANY. ANY REPRODUCTION IN PART OR AS A WHOLE WITHOUT THE WRITTEN PERMISSION OF KICKHAEFER MANUFACTURING COMPANY IS PROHIBITED.

PART SERIES  
MASTER PRINT

**CWV**

WIRING AND TUBE  
CLAMPS

DRAWN CHECKED

BC KW

8/22/17 9/11/18

NOT TO SCALE REV 2

5

4

3

2

1

A

A