

5

4

3

2

1

Material and Finish Codes

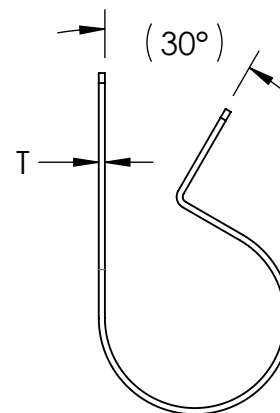
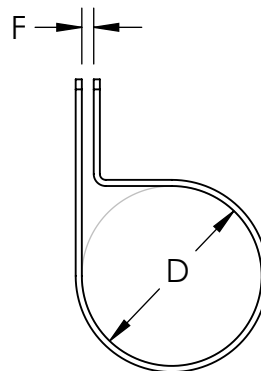
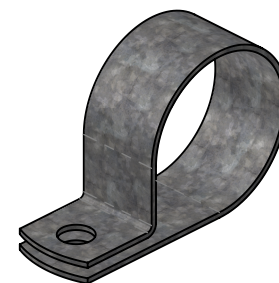
Z1 - CS, HD Galvanized, Chem Treated G90

Z2 - CS, .0003 min Zinc, Clear

REVISIONS

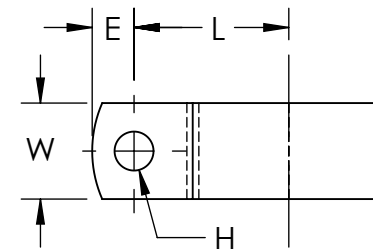
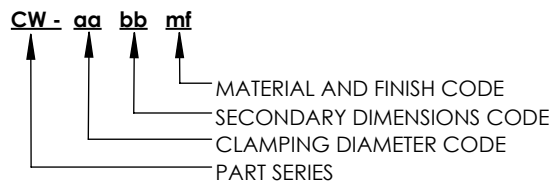
REV.	DESCRIPTION	DATE	APPROVED
1	Update Z2 Suffix to .0003 min.	11/17/2020	C. Goettl
2	Redrawn for Center to Center Dimension	6/23/2022	C. Goettl

Clamping Diameter (D)	Center to Center (L)
$\frac{aa}{16}$	$\frac{aa}{32} + \frac{H}{2} + .235$
$\pm .015$	$\pm .031$

As Supplied
(Open Position)

bb	Hole Diameter (H)	Hole Center to End (E)	Width (W)	Gap (F)	Material Thickness (T)
05	.172	.187	.375	.062	.032
07	.203	.218	.500		
	$\pm .005$	$\pm .015$	$\pm .010$	$\pm .031$	

Note: CW clamps have circular holes on the top and bottom sides with diameter H

**EXPLANATION OF PART CALLOUT****EXAMPLE OF PART CALLOUT****CW - 16 07 Z1**

This part number indicates the clamp will have dimensions:
 Clamping Diameter (D) = 1.000
 Hole Diameter (H) = .203
 Center to Center (L) = .781
 Width (W) = .500
 Hole Center To End (E) = .218

Made from CS, Hot Dipped Galvanized,
Chem Treated G90

THE ORIGINAL CLIP & CLAMP CO.
 1221 SOUTH PARK STREET
 PORT WASHINGTON, WI 53074
 (262) 377-5030

PROPRIETARY AND CONFIDENTIAL
 THE INFORMATION CONTAINED IN THIS DRAWING IS THE SOLE PROPERTY OF KICKHAEFER MANUFACTURING COMPANY. ANY REPRODUCTION IN PART OR AS A WHOLE WITHOUT THE WRITTEN PERMISSION OF KICKHAEFER MANUFACTURING COMPANY IS PROHIBITED.

PART SERIES
MASTER PRINT**CW**WIRING AND TUBE
CLAMPS

DRAWN

CHECKED

BC

KW

8/22/17

9/11/18

NOT TO SCALE

REV

1

5

4

3

2

1

A

A