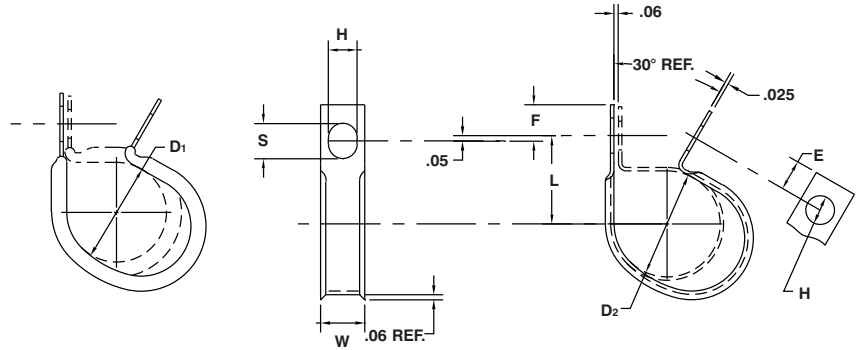


FLARED EDGE CLAMPS Closed Type – Furnished Open

MATERIAL: HD Galv Steel, Chem-Treated G90, Per ASTM A653/A653M

CUSHION: Black Vinyl, 1/32" Thick



| D ₁ | | D ₂ | | L | H | W | E | F | S |
|-------------------|-------------|-------------------|-------------|------------------|---------------|-------|--------------------|--------------------|-------------|
| Clamping Diameter | Part Number | Clamping Diameter | Part Number | Center To Center | Hole Diameter | Width | Hole Center To End | Slot Center To End | Slot Length |
| ±.031 | | ±.015 | | ±.031 | ±.005 | ±.010 | ±.015 | ±.015 | ±.020 |
| .187 | CFV-0409 | .250 | CF-0409 | .500 | .281 | .500 | .250 | .296 | .375 |
| .250 | CFV-0509 | .312 | CF-0509 | .531 | | | | | |
| .312 | CFV-0609 | .375 | CF-0609 | .562 | | | | | |
| .375 | CFV-0709 | .437 | CF-0709 | .593 | | | | | |
| .437 | CFV-0809 | .500 | CF-0809 | .625 | | | | | |
| .500 | CFV-0909 | .562 | CF-0909 | .656 | | | | | |
| .562 | CFV-1009 | .625 | CF-1009 | .687 | | | | | |
| .625 | CFV-1109 | .687 | CF-1109 | .718 | | | | | |
| .687 | CFV-1209 | .750 | CF-1209 | .750 | | | | | |
| .750 | CFV-1309 | .812 | CF-1309 | .781 | | | | | |
| .812 | CFV-1409 | .875 | CF-1409 | .812 | | | | | |
| .875 | CFV-1509 | .937 | CF-1509 | .843 | | | | | |
| .937 | CFV-1609 | 1.000 | CF-1609 | .875 | | | | | |
| 1.000 | CFV-1709 | 1.062 | CF-1709 | .906 | | | | | |
| .125 | CFV-0311 | .187 | CF-0311 | .500 | .343 | .562 | .281 | .328 | .437 |
| .187 | CFV-0411 | .250 | CF-0411 | .531 | | | | | |
| .250 | CFV-0511 | .312 | CF-0511 | .562 | | | | | |
| .312 | CFV-0611 | .375 | CF-0611 | .594 | | | | | |
| .375 | CFV-0711 | .437 | CF-0711 | .625 | | | | | |
| .437 | CFV-0811 | .500 | CF-0811 | .656 | | | | | |
| .500 | CFV-0911 | .562 | CF-0911 | .688 | | | | | |
| .562 | CFV-1011 | .625 | CF-1011 | .719 | | | | | |
| .625 | CFV-1111 | .687 | CF-1111 | .750 | | | | | |
| .687 | CFV-1211 | .750 | CF-1211 | .781 | | | | | |
| .750 | CFV-1311 | .812 | CF-1311 | .812 | | | | | |
| .812 | CFV-1411 | .875 | CF-1411 | .844 | | | | | |
| .875 | CFV-1511 | .937 | CF-1511 | .875 | | | | | |
| .937 | CFV-1611 | 1.000 | CF-1611 | .906 | | | | | |
| 1.000 | CFV-1711 | 1.062 | CF-1711 | .938 | | | | | |
| .125 | CFV-0313 | .187 | CF-0313 | .562 | .406 | .625 | .312 | .359 | .500 |
| .187 | CFV-0413 | .250 | CF-0413 | .593 | | | | | |
| .250 | CFV-0513 | .312 | CF-0513 | .625 | | | | | |
| .312 | CFV-0613 | .375 | CF-0613 | .656 | | | | | |
| .375 | CFV-0713 | .437 | CF-0713 | .687 | | | | | |
| .437 | CFV-0813 | .500 | CF-0813 | .718 | | | | | |
| .500 | CFV-0913 | .562 | CF-0913 | .750 | | | | | |
| .562 | CFV-1013 | .625 | CF-1013 | .781 | | | | | |
| .625 | CFV-1113 | .687 | CF-1113 | .812 | | | | | |
| .687 | CFV-1213 | .750 | CF-1213 | .843 | | | | | |
| .750 | CFV-1313 | .812 | CF-1313 | .875 | | | | | |
| .812 | CFV-1413 | .875 | CF-1413 | .906 | | | | | |
| .875 | CFV-1513 | .937 | CF-1513 | .937 | | | | | |
| .937 | CFV-1613 | 1.000 | CF-1613 | .968 | | | | | |
| 1.000 | CFV-1713 | 1.062 | CF-1713 | 1.000 | | | | | |

Except for clamping diameter, dimensions of cushioned and plain parts are identical.